

**EGBP — KEMBLE****EGBP AD 2.1 AERODROME LOCATION INDICATOR AND NAME**

EGBP — KEMBLE

**EGBP AD 2.2 AERODROME GEOGRAPHICAL AND ADMINISTRATIVE DATA**

|   |   |  |
|---|---|--|
| 1 | ARP coordinates and site at AD  | Lat: 514005N Long: 0020325W<br>Mid-point of Runway 08/26   |
| 2 | Direction and distance from city  | 4.5 NM SW of Cirencester.  |
| 3 | Elevation / Reference temperature   | 436 FT / 19 °C   |
| 4 | Geoid undulation at AD ELEV PSN   | 160 FT   |
| 5 | Magnetic Variation / Annual Change  | 0.85°W (2019) / 0.15°E   |
| 6 | AD Administration<br>Address<br>Telephone<br>Telefax<br>E-mail address<br>Web address | KEMBLE AIR SERVICES LIMITED<br>The Control Tower, Kemble Airfield, Cirencester, Gloucestershire GL7 6BA.<br>01285-771177 (Kemble Ops)<br>01285-771318<br>ops@cotswoldairport.com<br>http://www.cotswoldairport.com |
| 7 | Type of Traffic permitted (IFR/VFR)   | IFR/VFR  |
| 8 | Remarks   | GA Agreement aerodrome. Refer to GEN 1.2 for notification requirements.<br>Designated aerodrome for Special Branch purposes.   |

**EGBP AD 2.3 OPERATIONAL HOURS**

|    |                            |  |
|----|----------------------------|--|
| 1  | AD Administration          | 0900-1700 (0800-1600); and by arrangement.   |
| 2  | Customs and immigration    | By arrangement. Minimum notice periods apply.  |
| 3  | Health and sanitation      |  |
| 4  | AIS Briefing Office        | As AD hours, in Operations Department. Self briefing.  |
| 5  | ATS Reporting Office (ARO) |  |
| 6  | MET Briefing Office        | As AD hours, in Operations Department. Self briefing.  |
| 7  | ATS                        | As AD hours. See also AD 2.18.   |
| 8  | Fuelling                   | Last uplift 15 minutes before aerodrome closes; and by arrangement.  |
| 9  | Handling                   | As AD hours and by arrangement.  |
| 10 | Security                   |  |
| 11 | De-icing                   |  |
| 12 | Remarks                    | This aerodrome is strictly PPR by telephone at all times.<br>Out of hours movements, refuelling and night flying by arrangement.<br>AD may close during adverse weather conditions including snow. |

**EGBP AD 2.4 HANDLING SERVICES AND FACILITIES**

|   |   |   |
|---|---|---|
| 1 | Cargo handling facilities               | By Arrangement.   |
| 2 | Fuel and oil types                      | AVTUR JET A1 (F35), AVGAS 100LL<br>W80, W100, 80, 100, 15W50  |
| 3 | Fuelling facilities/capacity            | AVGAS 100LL fuel installation is self service (pay at pump). Mobile bowser available. Jet fuel requirements by arrangement with Kemble Ops before uplift. |
| 4 | De-icing facilities                     |   |
| 5 | Hangar space for visiting aircraft      | Limited.  |
| 6 | Repair facilities for visiting aircraft | Limited.  |
| 7 | Remarks                                 | Handling service contacts:<br>Operations - Kemble Air Services Ltd.<br>Tel: +44 (0)1285-771177<br>Email: ops@cotswoldairport.com                          |

### EGBP AD 2.5 PASSENGER FACILITIES

|   |                      |   |
|---|----------------------|---|
| 1 | Hotels               | Hotels in vicinity.   |
| 2 | Restaurants          | On aerodrome.   |
| 3 | Transportation       | Taxis and car hire available by pre-booking through handling agent.<br>Nearest railway station: 1 mile. |
| 4 | Medical facilities   | Limited first aid.  |
| 5 | Bank and Post Office | Bank 5 miles. Post Office 1 mile.   |
| 6 | Tourist Office       | 5 miles.  |
| 7 | Remarks              | Accommodation and transportation arrangements can be made via handling agent.                           |

### EGBP AD 2.6 RESCUE AND FIRE FIGHTING SERVICES

|   |   |  |
|---|---|--|
| 1 | AD category for fire fighting services      | RFF Category A2<br>Category 3 available on request.  |
| 2 | Rescue equipment                            |  |
| 3 | Capability for removal of disabled aircraft | In the event of an incident, light aircraft can be removed using airport resources.<br>Large aircraft can be removed using outside sources in conjunction with aircraft operators. |
| 4 | Remarks                                     |  |

### EGBP AD 2.7 SEASONAL AVAILABILITY - CLEARING

INTENTIONALLY BLANK

### EGBP AD 2.8 APRONS, TAXIWAYS AND CHECK LOCATIONS/POSITIONS DATA

|   |                                     |  |
|---|-------------------------------------|--|
| 1 | Apron surface and strength          | ALPHA/TOWER APRON<br>Surface: Grass<br><br>BELFAST/NORTH APRON<br>Surface: Asphalt<br><br>D SITE APRON<br>Surface: Asphalt<br><br>G SITE AREA<br>Surface: Asphalt  |
| 2 | Taxiway width, surface and strength | Taxiway A A3-A4: 23 M<br>Surface: Macadam<br><br>Taxiway A A4-A5: 15 M<br>Surface: Macadam<br><br>Taxiway A A5-H SITE: 10.5 M<br>Surface: Macadam<br><br>Taxiway A RWY-A2: 10.5 M<br>Surface: Macadam<br><br>Taxiway B RWY-NORTH APRN: 15 M<br>Surface: Macadam<br><br>Taxiway C RWY-RWY: 10.5 M<br>Surface: Macadam<br><br>Taxiway D D2-W/SIDE APRN: 10.5 M<br>Surface: Macadam |

|   |   |   |
|---|---|---|
|   |   | Taxiway D RWY-D2: 15 M<br>Surface: Macadam  |
|   |   | Taxiway G G1-TWY D: 7.5 M<br>Surface: Grass |
| 3 | Altimeter checkpoint location and elevation |   |
| 4 | VOR checkpoints                             |   |
| 5 | INS checkpoints                             |   |
| 6 | Remarks                                     |   |

**EGBP AD 2.9 SURFACE MOVEMENT GUIDANCE AND CONTROL SYSTEM AND MARKINGS**

|   |   |  |
|---|---|--|
| 1 | Use of aircraft stand ID signs, TWY guide lines and visual docking/parking guidance system of aircraft stands | Stand 1, 2, 3 and 4 on D-site apron, have self-manoeuvring markings.<br>Stands 1-3 are suitable for aircraft with a maximum wingspan of 28 m.<br>Entrance to Stands 1-3 are via Taxiway G.<br>Entrance to Stand 4 is via Taxiway A and is suitable for B737-800 and A321.  |
| 2 | Runway and taxiway markings and lighting  | Runway marking aid(s):<br>08/26: Runway designation, threshold and centre-line, touchdown zone and fixed distances. Runway width is designated by side stripe markings.<br><br>Runway light(s):<br>Runway edge and end of pavement lights. Amber guard lights at Alpha 3, Bravo 1 and Delta 1.<br><br>Taxiway marking aid(s):<br>Taxiways A, B, C, D have yellow centre-line and edge markings.<br><br>Taxiway light(s):<br>Illuminated Hold boards at Alpha 3, Bravo 1 and Delta 1. |
| 3 | Stop bars   |  |
| 4 | Remarks   | Illuminated windsock abeam control tower, mid-point Runway 08/26.<br>All Runway and taxiway marking are to EASA/ICAO standard not CAA.   |

**EGBP AD 2.10 AERODROME OBSTACLES**

| In Approach/Take-off areas          |                 |                           |                  |  |                                   |         |
|-------------------------------------|-----------------|---------------------------|------------------|--|-----------------------------------|---------|
| Obstacle ID/ Designation            | Obstacle Type   | Obstacle Position         | Elevation/Height |  | Obstruction Lighting Type/ Colour | Remarks |
| 1                                   | 2               | 3                         | 4                |  | 5                                 | 6       |
| (EGBP6760) 26/APPROACH 08/ TAKE-OFF | HANGAR          | 514013.42N<br>0020257.04W | 472 FT           |  | Yes<br>Red                        |         |
| (EGBP6605) 26/APPROACH 08/ TAKE-OFF | HANGAR          | 514012.69N<br>0020257.25W | 457 FT           |  | No                                |         |
| (EGBP7160) 26/APPROACH 08/ TAKE-OFF | VEHICLE ON ROAD | 514006.76N<br>0020238.67W | 421 FT           |  | No                                |         |
| (EGBP7062) 26/APPROACH 08/ TAKE-OFF | TREE            | 514006.08N<br>0020224.30W | 483 FT           |  | No                                |         |
| (EGBP6509) 08/APPROACH 26/ TAKE-OFF | MAST            | 514001.70N<br>0020450.99W | 488 FT           |  | No                                |         |
| (EGBP6939) 08/APPROACH 26/ TAKE-OFF | TREE            | 514001.55N<br>0020431.74W | 472 FT           |  | No                                |         |
| (EGBP6138) 08/APPROACH 26/ TAKE-OFF | TREE            | 514000.89N<br>0020513.63W | 523 FT           |  | No                                |         |

| In circling area and at aerodrome |               |                           |                  |  |                                   |         |
|-----------------------------------|---------------|---------------------------|------------------|--|-----------------------------------|---------|
| Obstacle ID/ Designation          | Obstacle Type | Obstacle Position         | Elevation/Height |  | Obstruction Lighting Type/ Colour | Remarks |
| 1                                 | 2             | 3                         | 4                |  | 5                                 | 6       |
| (EGBP4293)                        | TREE          | 514229.26N<br>0020605.04W | 668 FT           |  | No                                |         |
| (EGBP4298)                        | TREE          | 514158.78N<br>0020504.45W | 622 FT           |  | No                                |         |
| (EGBP6703)                        | AERIAL        | 514011.02N<br>0020326.45W | 489 FT           |  | No                                |         |

### EGBP AD 2.11 METEOROLOGICAL INFORMATION PROVIDED

|    |   |   |
|----|---|---|
| 1  | Associated MET Office   |   |
| 2  | Hours of service<br>MET Office outside hour                         |   |
| 3  | Office responsible for TAF preparation<br>Periods of validity       |   |
| 4  | Trend forecast<br>Interval of issuance                              |   |
| 5  | Briefing/consultation provided                                      | Self briefing/telephone through Kemble Operations Department. |
| 6  | Flight documentation<br>Language(s) used                            |   |
| 7  | Charts and other information available for briefing or consultation | Form 214/215/415 TAF/METAR AIRMET. Internet access.           |
| 8  | Supplementary equipment available for providing information         |   |
| 9  | ATS units provided with information                                 |   |
| 10 | Additional information (limitation of service, etc.)                | Unofficial observations made during AD hours.                 |

### EGBP AD 2.12 RUNWAY PHYSICAL CHARACTERISTICS

| Designations RWY Number | True bearing | Dimensions of RWY | Surface of RWY/ SWY/ Strength (PCN)    | THR co-ordinates/ THR Geoid undulation | THR elevation/ Highest elevation of TDZ of precision APP RWY | Slope of RWY/ SWY |
|-------------------------|--------------|-------------------|--|--|--|-------------------|
| 1                       | 2            | 3                 | 4                                      | 5                                      | 6  | 7                 |
| 08                      | 080.41°      | 1973 x 45 M       | RWY surface: Asphalt<br>PCN 29/F/C/W/T | 514000.60N<br>0020407.12W<br>160 FT    | THR 433 FT   |                   |
| 26                      | 260.43°      | 1973 x 45 M       | RWY surface: Asphalt<br>PCN 29/F/C/W/T | 514009.33N<br>0020243.97W<br>160 FT    | THR 411 FT   |                   |
| 08G                     | 080.37°      | 561 x 18 M        | RWY surface: Grass                     | 514006.96N<br>0020334.09W<br>160 FT    | THR 434 FT   |                   |
| 26G                     | 260.37°      | 561 x 18 M        | RWY surface: Grass                     | 514010.00N<br>0020305.28W<br>160 FT    | THR 428 FT   |                   |

| SWY Dimensions | Clearway Dimensions | Strip Dimensions | RESA Dimensions, Overshoot / Undershoot | Location/ description of arresting system | OFZ | Remarks  |
|----------------|---------------------|------------------|---|---|-----|--|
| 8              | 9                   | 10               | 11                                      | 12  | 13  | 14   |
|                |                     | 1917 x 150 M     |   |   |     | RWY 08<br><br>Threshold displaced by 170 M.<br><br>The longitudinal slope for Runway 08/26 exceeds the 1.5% maximum slope for 95 M starting from the threshold of Runway 26. The local slope is 1.66% up.<br><br>Elevated Aerodrome Ground Lighting mounted on white edge markings, 1 M in from runway physical edge.<br><br>OFZ: Yes. |
|                |                     | 1917 x 150 M     |   |   |     | RWY 26<br><br>Threshold displaced by 183 M.<br><br>The longitudinal slope for Runway 08/26 exceeds the 1.5% maximum slope for 95 M starting from the threshold of Runway 26. The local slope is 1.66% up.<br><br>Elevated Aerodrome Ground Lighting mounted on white edge markings, 1 M in from runway physical edge.<br><br>OFZ: Yes. |
|                |                     | 621 x 30 M       |   |   |     | RWY 08G  |
|                |                     | 621 x 30 M       |   |   |     | RWY 26G  |

**EGBP AD 2.13 DECLARED DISTANCES**

| Runway designator | TORA   | TODA   | ASDA   | LDA    | Remarks                                  |
|-------------------|--------|--------|--------|--------|--|
| 1                 | 2      | 3      | 4      | 5      | 6  |
| 08                | 1758 M | 1758 M | 1798 M | 1778 M |  |
| 26                | 1799 M | 1799 M | 1799 M | 1640 M |  |
| 08                | 1149 M | 1149 M | 1189 M |        | Take-off from intersection of Taxiway D. |
| 08                | 975 M  | 975 M  | 1015 M |        | Take-off from intersection of Taxiway B. |
| 26                | 1410 M | 1410 M | 1410 M |        | Take-off from intersection of Taxiway A. |
| 26                | 637 M  | 637 M  | 637 M  |        | Take-off from intersection of Taxiway B. |
| 08G               | 561 M  | 561 M  | 561 M  | 561 M  |  |
| 26G               | 561 M  | 561 M  | 561 M  | 561 M  |  |

**EGBP AD 2.14 APPROACH AND RUNWAY LIGHTING**

| RWY | Approach lighting Type/ Length/ Intensity | Threshold lighting Colour/Wing bars             | VASIS/ MEHT/ PAPI/ PAPI Dist from THR | TDZ, lighting Length | Runway Centre Line lighting Length/ Spacing/ Colour/ Intensity | Runway edge lighting Length/ Spacing/ Colour/ Intensity               | Runway end lighting Colour/ Wing bars | Stopway lighting Length/ Colour | Remarks |
|-----|---|---|---------------------------------------|----------------------|--|---|---------------------------------------|---------------------------------|---------|
| 1   | 2   | 3   | 4                                     | 5                    | 6  | 7   | 8                                     | 9                               | 10      |
| 08  |   | Light intensity high<br>Elevated green wingbars | APAPI Left/3°<br>29 FT<br>184 M       |                      |  | Elevated bi-directional 60 M spacing<br>White<br>Light intensity high | Red                                   |                                 |         |
| 26  |   | Light intensity high<br>Elevated green wingbars | APAPI Left/3°<br>29 FT<br>138 M       |                      |  | Elevated bi-directional 60 M spacing<br>White<br>Light intensity high | Red                                   |                                 |         |

**EGBP AD 2.15 OTHER LIGHTING, SECONDARY POWER SUPPLY**

|   |   |   |
|---|---|---|
| 1 | ABN/IBN location, characteristics and hours of operation      | ABN: 514011.02N 0020326.45W<br>Flashing White, mounted on the roof of the tower.<br>As required when AD is open.                      |
| 2 | LDI location and lighting<br>Anemometer location and lighting |   |
| 3 | TWY edge and centre line lighting                             | EDGE: Elevated blue edge lights on Taxiway B and North Apron. Blue reflective markers on Taxiway D, from Taxiway B to Woodside apron. |
| 4 | Secondary power supply/switch-over time                       |   |
| 5 | Remarks   |   |

**EGBP AD 2.16 HELICOPTER LANDING AREA**

|   |   |   |
|---|---|---|
| 1 | Coordinates TLOF or THR of FATO, geoid undulation                   |   |
| 2 | TLOF and/or FATO elevation  |   |
| 3 | TLOF and FATO area dimensions, surface, strength, marking, lighting |   |
| 4 | True BRG of FATO  |   |
| 5 | Declared distance available   |   |
| 6 | APP and FATO lighting   |   |
| 7 | RMK   | Helipad A located on Stand 1 (D-site apron).<br>Helipad B located on North Apron. |

**EGBP AD 2.17 AIR TRAFFIC SERVICES AIRSPACE**

| Designation and lateral limits  | Vertical Limits                                | Airspace Class | ATS unit callsign/ language      | Transition Altitude | Hours of applicability | Remarks |
|---|--|----------------|----------------------------------|---------------------|------------------------|---------|
| 1   | 2  | 3              | 4                                | 5                   | 6                      | 7       |
| KEMBLE ATZ<br>A circle, 2 NM radius, centred at 514005N 0020325W on longest notified runway (08/26) | Upper limit:<br>2000 FT<br>Lower limit:<br>SFC | G              | KEMBLE<br>INFORMATION<br>English | 3000 FT             |                        |         |

**EGBP AD 2.18 AIR TRAFFIC SERVICES COMMUNICATION FACILITIES**

| Service Designation | Callsign           | Channel(s)                             | SATVOICE number(s) | Logon Address | Hours of Operation                            | Remarks        |
|---------------------|--------------------|--|--------------------|---------------|---|----------------|
| 1                   | 2                  | 3                                      | 4                  | 5             | 6   | 7              |
| AFIS                | KEMBLE INFORMATION | 118.430 MHz<br>DOC 10 NM/<br>3,000 FT. |                    |               | 0900-1700 (0800-1600);<br>and by arrangement. | ATZ hours H24. |

**EGBP AD 2.19 RADIO NAVIGATION AND LANDING AIDS**

INTENTIONALLY BLANK

**EGBP AD 2.20 LOCAL AERODROME REGULATIONS****1 AIRPORT REGULATIONS**

- Special procedures are in force for some flying events, details as published by AIC and NOTAM.
- Non-Radio aircraft not accepted.
- While airside each aircraft commander is responsible for the safety of his passengers and other crew members. Passengers are at all times to be escorted by the aircraft commander or crew member who is known to be competent to ensure his/her and the passengers safety. The wearing of high visibility clothing is mandatory.
- Aircraft commanders or crew members, as applicable, are responsible for ensuring that a total ban on smoking whilst airside is observed.
- Aerodrome is not available when closed/out of published hours, to aircraft without a valid out of hours indemnity form.

**2 GROUND MOVEMENT**

- Vehicles cross the runway at 08 threshold under traffic light control during aerodrome operating hours.
- Taxiway Alpha between A1-A2 and Taxiway Charlie may be closed at any time. Essential aerodrome information will be provided by Kemble AFIS.

**3 CAT II/III OPERATIONS**

Not applicable

**4 WARNINGS**

- Be aware of proximity of Aston Down gliding centre 4 nm NW, winch launching to 3000 ft agl. Avoid South Cerney to the east, it is regularly active up to FL 120 with para dropping.
- High performance aircraft occasionally carry out non-standard manoeuvres.
- Windshear or turbulence may be experienced on final approach to Runway 26 in strong southerly or north westerly winds.
- Grass areas, including grass runway 08/26 and golf taxiway, are subject to restricted use or closure due to waterlogging and subsequent soak away, during and following periods of wet weather.
- During moderate/heavy rain, standing water forms at the runway edge on the start of Taxiway Delta. This may take up to 48 hours to drain.
- Model flying operates from the south west corner of the aerodrome, position \*513948.10N 0020349.60W, up to 200 ft and occasionally up to 400 ft, during daylight hours up to 2000.

**5 HELICOPTER OPERATIONS**

- All rotary traffic to call for engine/rotor start.
- Helicopters may operate south of Runway 08/26 (asphalt) for training up to 700 ft aal, inside the fixed wing circuit.

**6 USE OF RUNWAYS**

Not applicable.

**7 TRAINING**

- All circuit training strictly PPR.
- Display practices must be booked in advance.

## EGBP AD 2.21 NOISE ABATEMENT PROCEDURES

- a) Pilots should avoid overflying the villages and hamlets of Kemble, Kemble Wick, Rodmarton, Culkerton, Ashley and Chelworth, wherever possible.
- b) Contact Kemble Operations for detailed noise abatement procedures.

## EGBP AD 2.22 FLIGHT PROCEDURES

### 1 CIRCUITS

- a) Circuit Heights: Jet circuit 1500 ft aal. Fixed-wing 1000 ft aal.
- b) The standard circuit patterns are Right hand Runway 08 and Left hand on Runway 26.
- c) All fixed wing GA traffic to join overhead.

### 2 IFR DEPARTURES JOINING AIRWAYS

- a) Aircraft departing Kemble IFR to the east should plan to join controlled airspace at MALBY.

**Note:** *SIREN, MIMBI, KENET and CPT flight plans can all expect a MALBY join.*

- b) Aircraft departing Kemble IFR to the west should plan to join controlled airspace at MALBY or BRECON (BCN).

**Note:** *WOTAN, ALVIN and BADIM can also be used.*

- c) Aircraft departing Kemble IFR to the north east should plan to join controlled airspace at either DAVENTRY (DTY) or HONILEY ( HON).
- d) Aircraft departing Kemble IFR to the north west should plan to join controlled airspace at NITON or BRECON (BCN).

## EGBP AD 2.23 ADDITIONAL INFORMATION

Not applicable

## EGBP AD 2.24 CHARTS RELATED TO AN AERODROME

AERODROME CHART - ICAO

AD 2.EGBP-2-1

AIRCRAFT PARKING/DOCKING CHART - ICAO

AD 2.EGBP-2-2



**AERODROME CHART - ICAO**

ARP 514005N 0020325W

AD ELEV 436FT

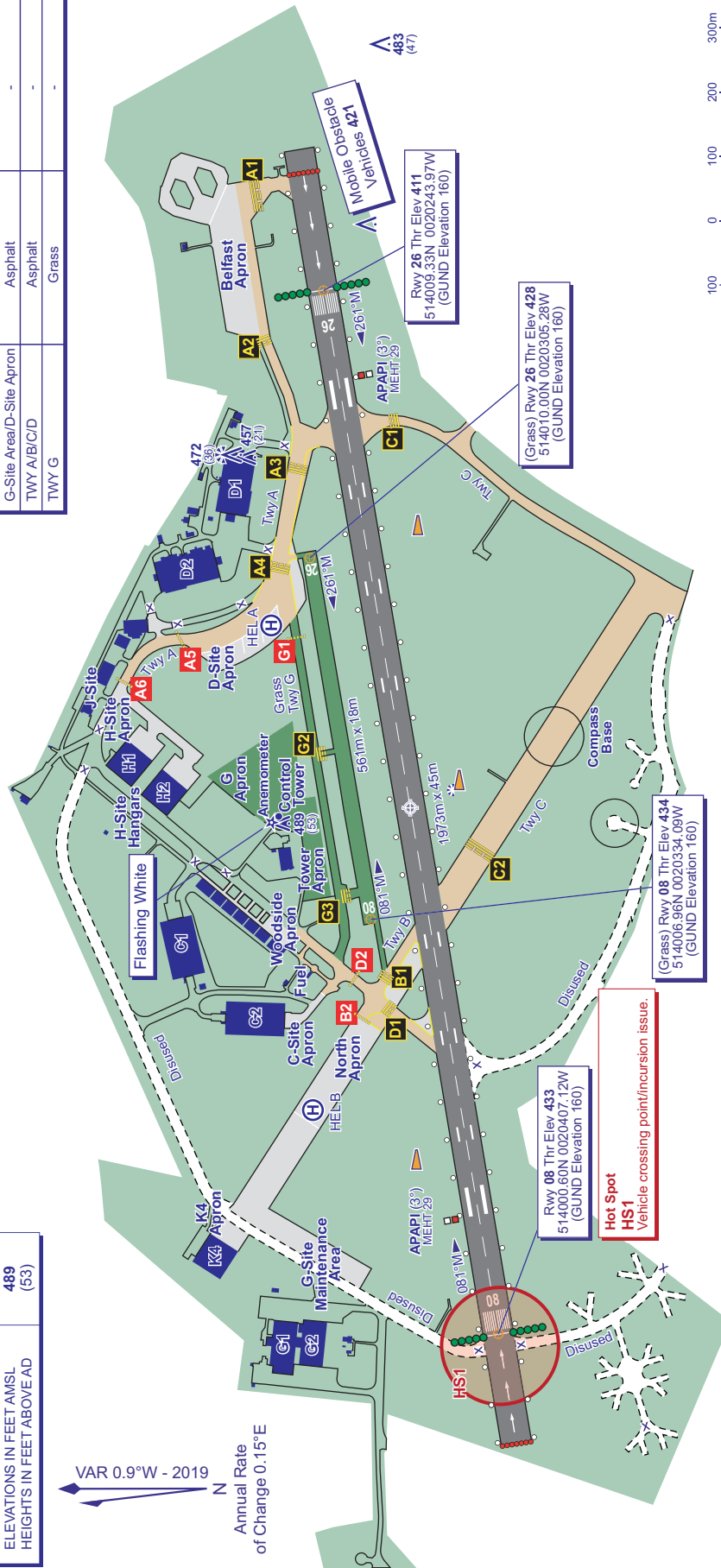
**KEMBLE EGBP**

|   |                    |
|---|--------------------|
| <b>GUND</b> (Geoid Undulation) =<br>The height of the Geoid (MSL) above the<br>Reference Ellipsoid (WGS 84) at the stated position. |                    |
| <b>BEARINGS ARE MAGNETIC</b><br>ELEVATIONS AND HEIGHTS ARE IN FEET  |                    |
| <b>ELEVATIONS IN FEET AMSL</b><br>HEIGHTS IN FEET ABOVE AD  | <b>489</b><br>(53) |

AERO INFO DATE 09 SEP 19

| RUNWAY/TAXIWAY/APRON PHYSICAL CHARACTERISTICS |         |                  |
|---|---------|------------------|
| APRON / RWY / TWY                             | SURFACE | BEARING STRENGTH |
| RWY 08/26                                     | Asphalt | 29/F/C/W/T       |
| Apron G/Tower Apron                           | Grass   | -                |
| Belfast/North Apron                           | Asphalt | -                |
| G-Site Area/D-Site Apron                      | Asphalt | -                |
| TWY A/B/C/D                                   | Asphalt | -                |
| TWY G   | Grass   | -                |

VAR 0.9°W - 2019  
N  
Annual Rate  
of Change 0.15°E



**Hot Spot HS1**  
Vehicle crossing point/incursion issue.

Rwy 08 Thr Elev 433  
514000.60N 0020407.12W  
(GUND Elevation 160)

(Grass) Rwy 08 Thr Elev 434  
514006.96N 0020334.09W  
(GUND Elevation 160)

(Grass) Rwy 26 Thr Elev 428  
514010.00N 0020305.28W  
(GUND Elevation 160)

Rwy 26 Thr Elev 411  
514009.33N 0020243.97W  
(GUND Elevation 160)

|                 |         |                                    |
|-----------------|---------|------------------------------------|
| <b>COM</b>      | 118.430 | KEMBLE INFO                        |
| <b>AFIS</b>     |         |                                    |
| <b>LIGHTING</b> |         |                                    |
| THR 08/26       |         | HI elev green W bars.              |
| RWY 08/26       |         | HI elev bi-d edge. End lights red. |

CHANGE (12/19): OBSTACLES, TAXIWAYS, D-SITE APRON, RWY 08/26 DIMENSIONS.

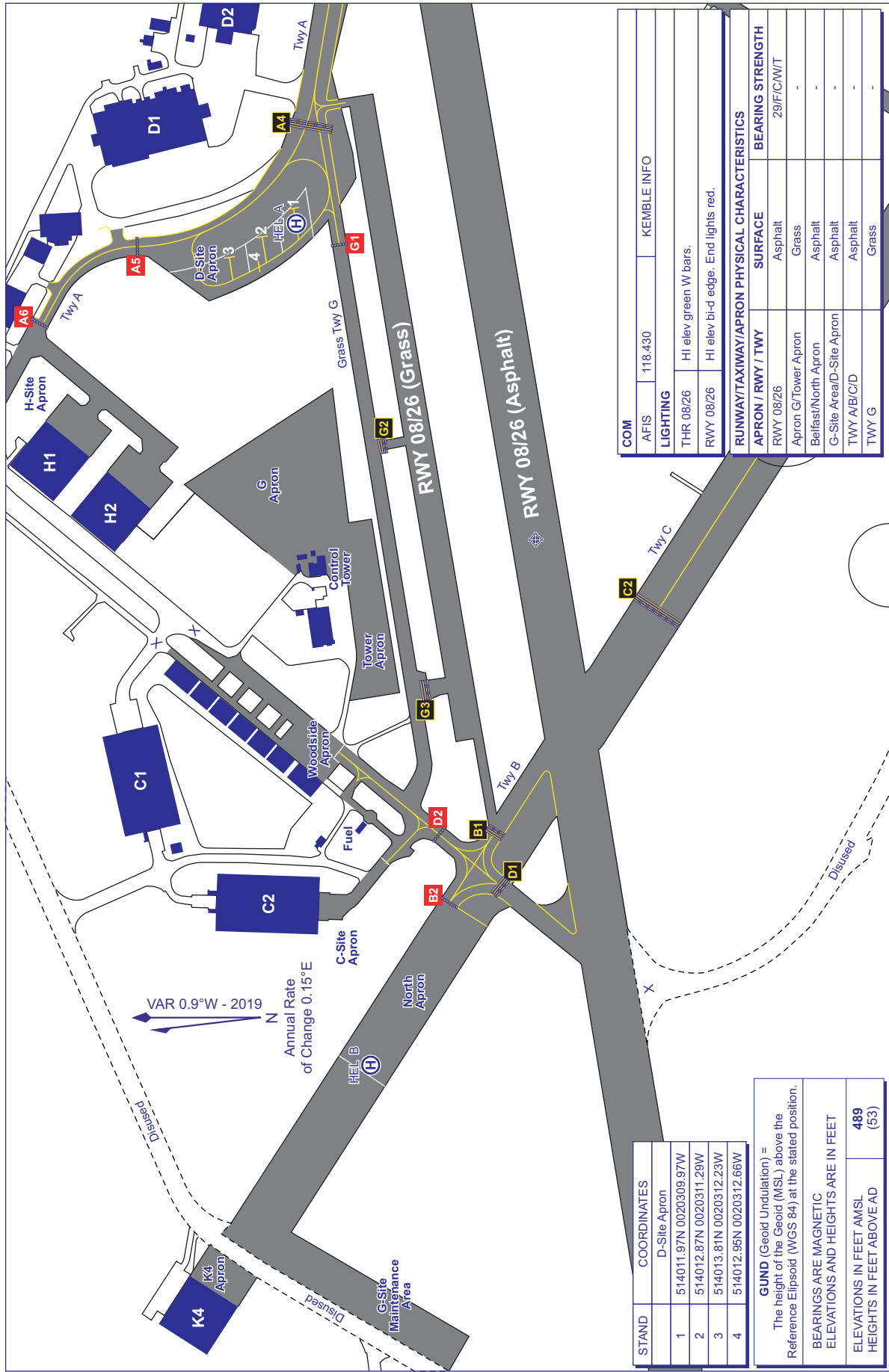
AD 2-EGBP-2-1

AIRCRAFT PARKING/DOCKING  
CHART - ICAO

ARP 514005N 0020325W

AD ELEV 436FT

KEMBLE  
EGBP



AERO INFO DATE 09 SEP 19

| STAND | COORDINATES            |
|-------|------------------------|
|       | D-Site Apron           |
| 1     | 514011.97N 0020309.97W |
| 2     | 514012.87N 0020311.29W |
| 3     | 514013.81N 0020312.23W |
| 4     | 514012.95N 0020312.66W |

|   |                    |
|---|--------------------|
| <b>GUND</b> (Geoid Undulation) =<br>The height of the Geoid (MSL) above the<br>Reference Ellipsoid (WGS 84) at the stated position. |                    |
| BEARINGS ARE MAGNETIC<br>ELEVATIONS AND HEIGHTS ARE IN FEET   | <b>489</b><br>(53) |

| COM   |                                    | KEMBLE INFO      |  |
|---|------------------------------------|------------------|--|
| AFIS  | 118.430                            |                  |  |
| <b>LIGHTING</b>                               |                                    |                  |  |
| THR 08/26                                     | HI elev green W bars.              |                  |  |
| RWY 08/26                                     | HI elev bi-d edge. End lights red. |                  |  |
| RUNWAY/TAXIWAY/APRON PHYSICAL CHARACTERISTICS |                                    |                  |  |
| APRON / RWY / TWY                             | SURFACE                            | BEARING STRENGTH |  |
| RWY 08/26                                     | Asphalt                            | 29/F/C/W/T       |  |
| Apron G/Tower Apron                           | Grass                              | -                |  |
| Belfast/North Apron                           | Asphalt                            | -                |  |
| G-Site Area/D-Site Apron                      | Asphalt                            | -                |  |
| TWY A/B/C/D                                   | Asphalt                            | -                |  |
| TWY G   | Grass                              | -                |  |

CHANGE (12/19): TAXIWAYS. D-SITE APRON. STAND COORDINATES.

AD 2-EGBP-2-2